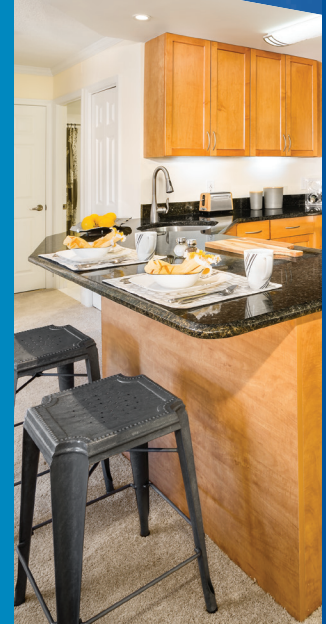
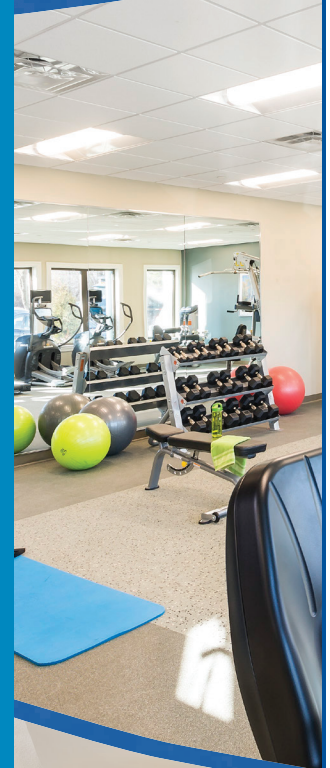


Water View Terrace Start *Living*

W
A
T
E
R
V
I
E
W
T
E
R
R
A
C
E



Water View Terrace is ideally located on Route 9, close to public transportation, major Interstates and only 30 minutes to downtown Boston.

The spacious studio, one and two bedroom apartment homes include all kitchen appliances, central air conditioning and private balconies. Residents also have access to a fitness center, swimming pool and sundeck, laundry rooms and 24-hour emergency response maintenance services. Enjoy comfort and convenience in this unique community that's only minutes from shopping, dining and leisure destinations.

Call Today! (508) 872-8854

FEATURES AND AMENITIES

- Brand new amenity center including home office center, Internet café, community room, fitness center, movie theatre, and conference room
- Free heat in select apartments
- Fully equipped kitchen
- Central air conditioning *(select units)*
- Luxury vinyl plank flooring *(select units)*
- Wall-to-wall carpeting *(select units)*
- Spacious closets
- Private terraces *(select units)*
- Controlled building access
- Covered parking available
- Laundry rooms
- Pool and sundeck
- Package acceptance
- Resident community garden
- Nearby public transportation
- Pet friendly – call for details
- Online rent payment
- 24-hour maintenance response guarantee
- Community sponsored resident events

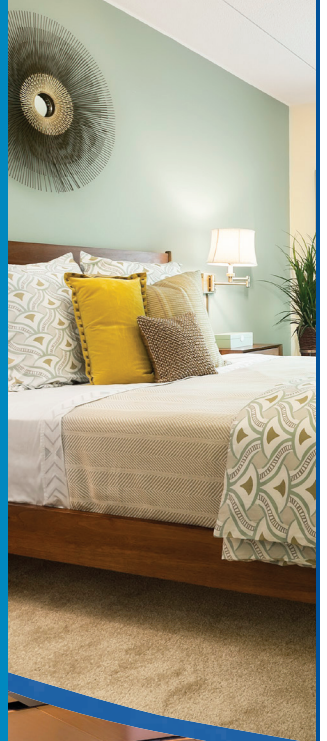
Residence features are subject to change and may be available in select apartments only.



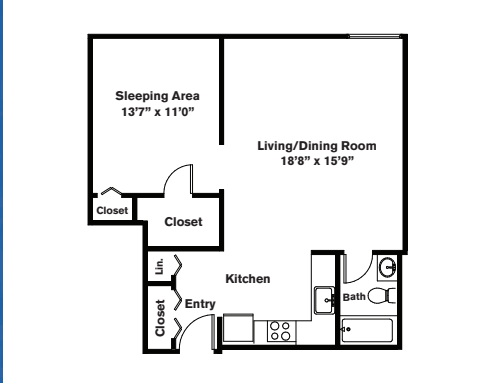
Water View Terrace

Start *Living*

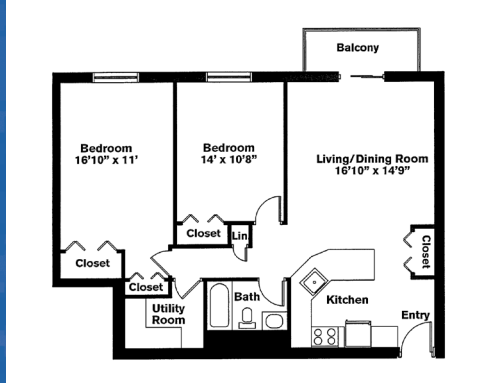
WATER VIEW TERRACE



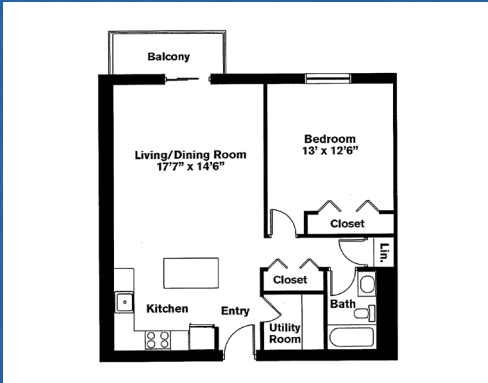
Studio ~ 1 Bath (740 sq. ft.)



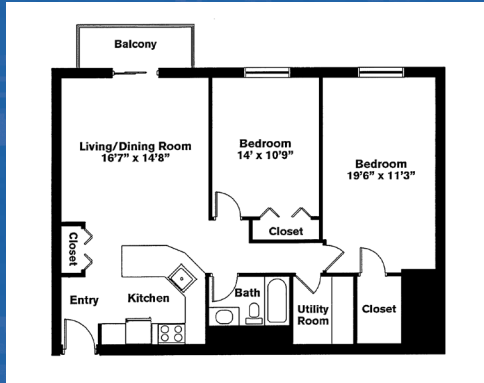
Two Bedrooms ~ 1 Bath (1,021 sq. ft.)



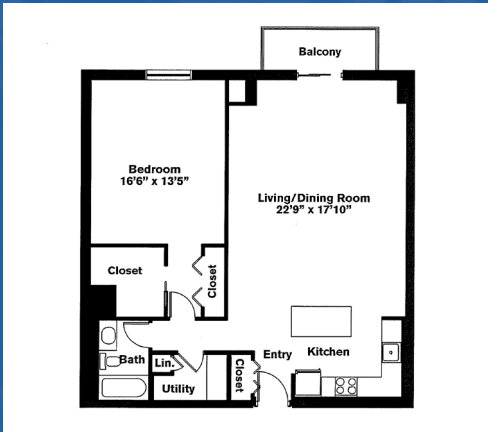
One Bedroom ~ 1 Bath (808 sq. ft.)



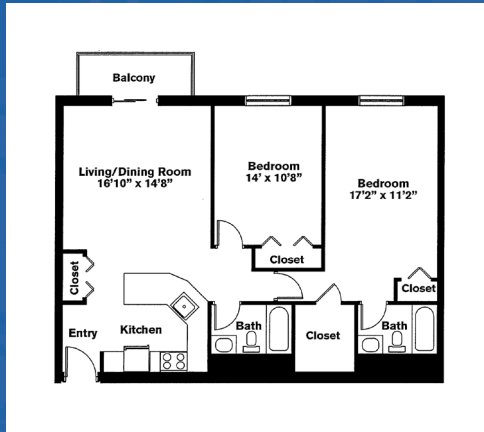
Two Bedrooms ~ 1 Bath (1,047 sq. ft.)



One Bedroom ~ 1 Bath (1,072 sq. ft.)



Two Bedrooms ~ 2 Baths (1,049 sq. ft.)



Variations may occur in some floor plan styles. Dimensions and square foot measurements are approximate.



LEASING OFFICE 1400 Worcester Road, Framingham, MA 01702

Please check website or contact the leasing office for hours.

(508) 872-8854 | CHR-Apartments.com @CHR.WVT.Apartments @WaterViewTrace



Chestnut Hill Realty